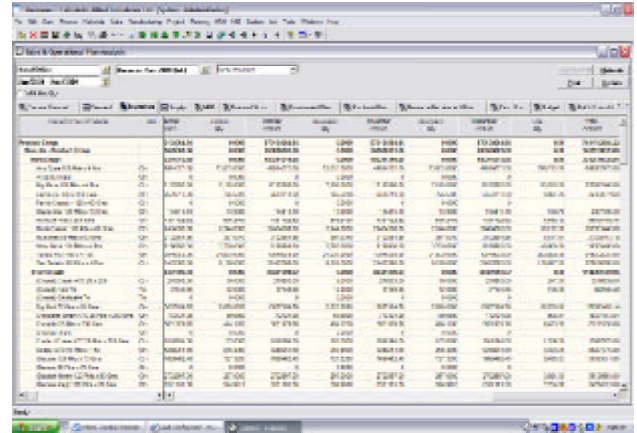




RECKONER PLANNING

Reckoner provides a comprehensive tool for organisations to evaluate projected demand and supply and their impact on the financials of the organisation on an annual and monthly time schedule.



Reckoner Planning has the flexibility to support a variety of manufacturing environments, such as Make to order, Make to Stock and Assemble to order. Manufacturing environment could be either process based or discrete for producing finished goods.

Reckoner Long term planning or Sales and Operation planning(SOP) enables an organisation to plan and estimate demand and supply of their key resources of man, money, machine and material and also to be able to do a 'What if' analysis for the same. Multiple types of planning documents can be defined. Each plan gives the projections for the year and breaks it down on a monthly basis. These plans can be revised periodically and versions can be saved and retrieved on demand.

SOP consists of Demand Forecast, Finished goods, Inventory, Master Production Schedule, MRP, Resource Plan, Purchase Plan, Budgeted Indirect expenses, and projected product wise contributions. The SOP is tightly integrated with other modules

of Reckoner, which ensures that your plan is based on realtime and accurate information. Creation of a demand forecast creates a complete plan and by simply modifying the sales forecast ,the entire plan can be automatically revised. Reckoner's SOP supports online comparisons of Planned v/s Actual completion , where the Actual completion is picked up from transaction data on a realtime basis.

Daily Production plan is derived from the committed sales orders and finished goods inventory. It auto generates the production orders based on the sales order delivery dates committed. Multi level BOM(for intermediates and semi- finished goods) is supported by Reckoner for discrete and component manufacturing organisations. Reckoner's planning for intermediate goods supports both make-to-order and make-to-stock. It picks up daily demand from production orders generated for finished goods and correspondingly raises production orders for intermediates. Reckoner planning also provides the option to plan for intermediates as part of multiple

job steps against a single manufacturing order.

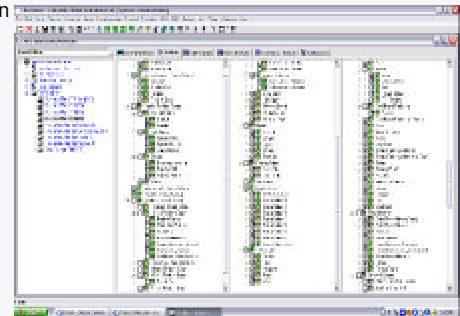
Control of inventory levels is one of the key benefits that an effective planning system is meant to give and is a crucial component of any good ERP system. While it is a fairly easy exercise for fixed production lines, it becomes very complex in a flexible manufacturing environment.

Reckoner's Material Requirement Planning supports Reorder level planning, Sales order based planning (Committed/ uncommitted orders or both), forecast based planning and consumption based planning. MRP takes into account available stock as well as stocks in the pipeline and generates purchase requisitions or purchase orders automatically.

Cash Flow planning is also generated by the system based on debtor and creditor outstandings as well as committed sales orders and expenses.

Reckoner Planning comprises of:

- o Long term Planning or SOP: Preparation of annual operation plans and schedules broken down monthly
 - Demand Forecast by territory and product
 - FG inventory levels, Production and traded goods supply plan
 - Material Requirement Plan, Raw Material stocking and Purchase plan
 - Resource Requirement and Budgeted Indirect expenses
 - Cash Flow, Working Capital requirement, Profit & Loss, Balance sheet projections
- o Short term planning
 - Reorder level Material Requirement planning
 - Production order based MRP
 - Sales orders based production plan



Reckoner Planning

Features

LONG TERM PLANNING

Sales and Operation Planning

- There are three Strategies. Level, Chase and CompromiseStrategy.
- SOP helps to resolve conflicts between various operating departments, which arise due to their conflicting objectives.
- Sales and Operation Planning uses sales forecast data
- SOP allows planning at the product group or family level and uses the optimum product mix for formula.

Master Production Planning

- Uses SOP data as a starting point and allows defining either Finished Goods inventory level or production targets
- System calculates the MPS, which acts as the baseline for production

Purchase Planning

- Inventory levels for RM can be defined
- Purchase Plan is calculated on basis of delivery lead times

Capacity Requirement Planning

- Capacity requirement is calculated on the basis of Production Plan

Budgeting and Profit & Loss Planning

- Indirect Budgeted expenses and Income can be defined in the plan document
- Reckoner calculates the projected Profit & Loss statement based on the above plans
- Planning also generates the projected Balance Sheet, cash flow and working capital requirement
- Product wise sales contribution and account level plan is also generated

Key Features

- Ability to define Multiple SOP document types with different product groups and territories
- Multiple SOP versions can be saved with unique document numbers
- 'What if' analysis for SOP by simply changing demand forecasts or rates
- Online Comparison reports of SOP and SOP versions with actual completions
- SOP recalculation with a simple click of recalculate button

SHORT TERM PLANNING

Production Planning

- Production plan generation based on committed sales orders and current finished goods stock
- Automatic generation of production orders based on required delivery dates. System picks up standard BOM and routing and generates production schedule
- Production Planning is online and any change in either sales orders or inventory or production orders is reflected instantly

Material Requirement Planning

- Total Planning and stock group level Planning
- Material Planning Procedures based on Production, Sales Consumption and Reorder Level
- Material Requirement Planning shows available stocks as well as stocks in pipeline
- Auto generation of purchase requisition or purchase orders
- Planning for intermediate products
- Auto generation of production orders for intermediates
- MRP is online and shows realtime data

Cash Flow Planning

- Reckoner Cash Budgeting integrates cash inflows and outflows arising out of various functional at different time intervals, like monthly, quarterly and yearly.
- Enables assessing the cash deficits, if any, at different time intervals so that finance can be raised at the required time to keep other activities of the organisation continue as per plan.
- To assess the projected cash surplus at different time intervals and draw investment plans so that no cash remains idle.

Integration

- Online data availability from Sales purchase, inventory and production
- Alerts can be set in the system to monitor exception activities or events.

SUB-MODULES & REPORTS LIST

Long Term Planning

- Sales and operation Plan
- Demand Forecast
- Master Production Plan
- Resource & Capacity Plan
- Material Requirement Plan
- Purchase Plan
- Budgeted Expenses
- Projected P & L and Balance sheet
- Cash Flow and Working capital Plan
- Product wise contribution plan

- Plan v/s Actual
- SOP 'What if' analysis

Short Term Planning

- Sales Requirement from pending sales orders
- Projected FG stocks plan
- Intermediate goods requirement
- Reorder level MRP
- Sales base raw material MRP
- Production based MRP
- Master Schedule Plan

- Capacity Requirement Plan
- Production Schedule Plan

Long Term Planning Reports

- SOP analysis details
- SOP analysis summary
- Planned v/s Actual for sales, FG, RM and production (quantity, amount & rate)
- Plan v/s Actual for P & L
- Plan v/s Actual for costing and contribution

Short Term Planning Reports

- Pending order based demand
- Pending manufacturing based supply report
- Projected FG stock
- Projected FG requirement
- MRP reorder level based
- MRP consumption based
- MRP production based
- MRP based on pending sales orders
- MRP for intermediate goods



ASCOMP TECHNOLOGIES PVT. LTD.

1203, Padma Towers - I, Rajendra Place, New Delhi - 110 008 INDIA
Phones: 91-11-41539101, 25762401 Fax: 91-11-5762403
Email : reckoner@ascomp.com
Website : http://www.ascomp.com

* © Copyright 2006 Ascomp Technologies Pvt. Ltd. No part of this document may be reproduced or published without the written permission of its author

*Specifications are subject to change without notice. Specific functionality as described is available with different configurations of Reckoner.

**All brands and product names listed are trademarks and registered trademarks of their respective owners.

